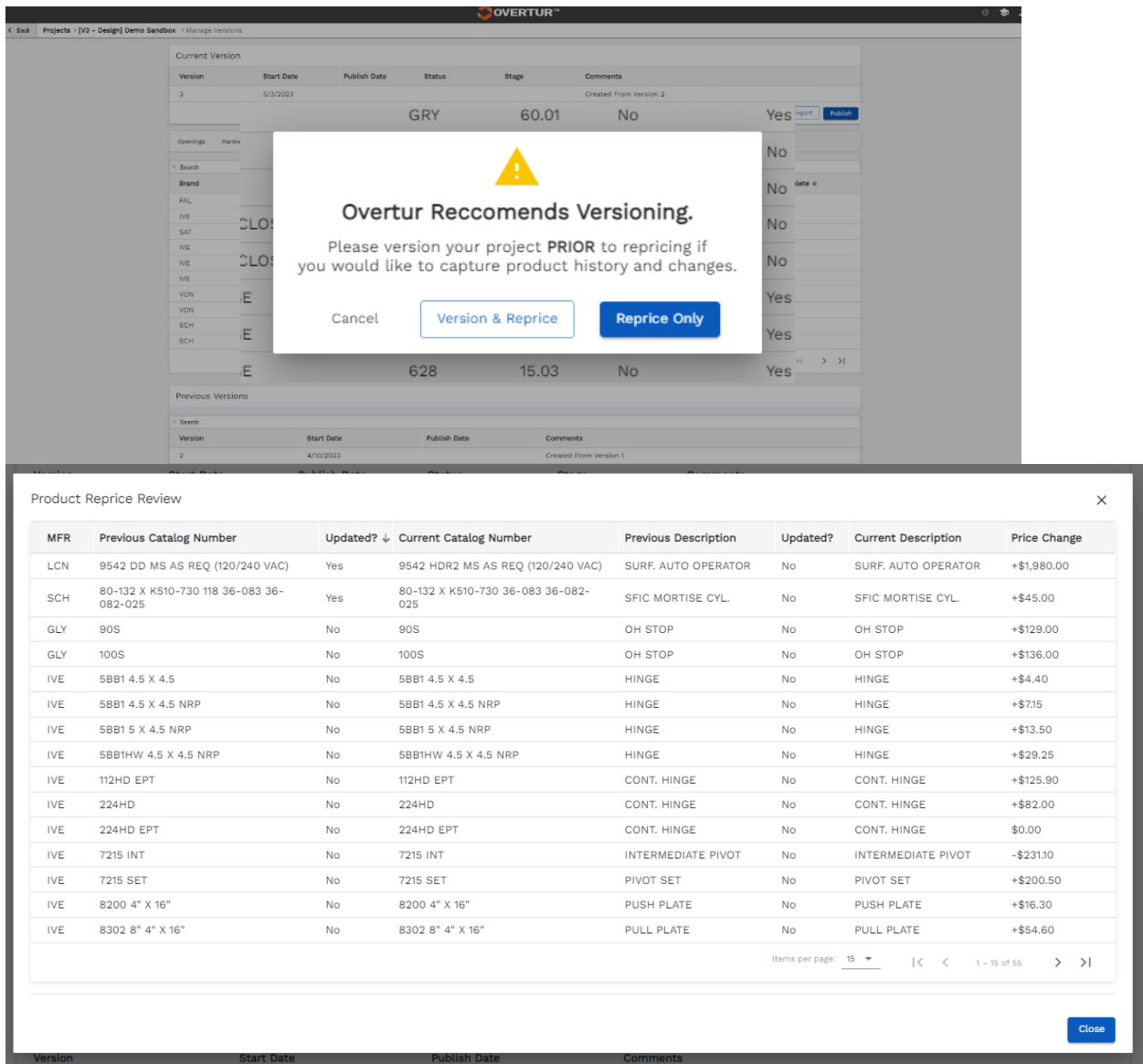


Latest changes in Overtur as of May 19, 2023

New Features

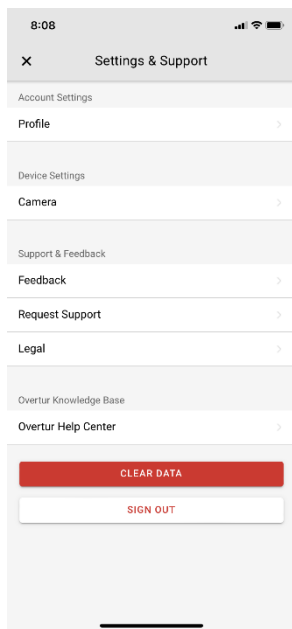
1. There is an enhancement that allows users see changes made to products when repricing. When repricing a project, users will be prompted with a window asking them to create a new version. When the new version is created, and the project is repriced, a pop-up window will inform users of changes on the project.



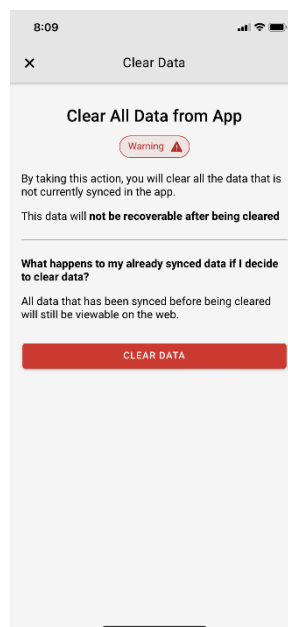
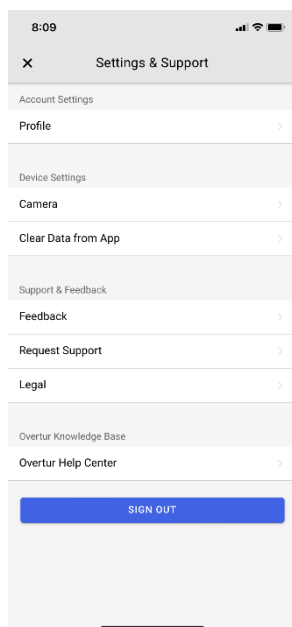
2. The Stanley Access Technologies specification is a new option in Reports.

Fixes

1. Mobile Bug fix: Openings created in Site Survey tool were showing up as installed in the Installation tool.
2. Clear Data location moved do prevent accidental taps.
 - o Current screen



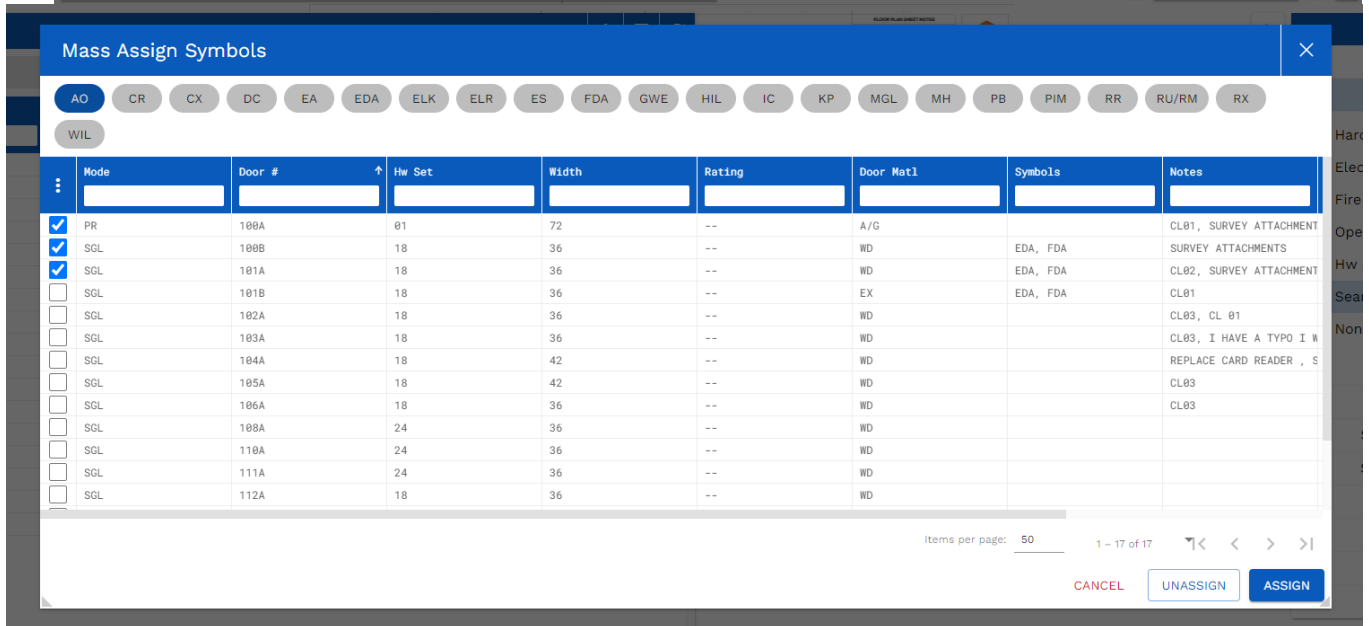
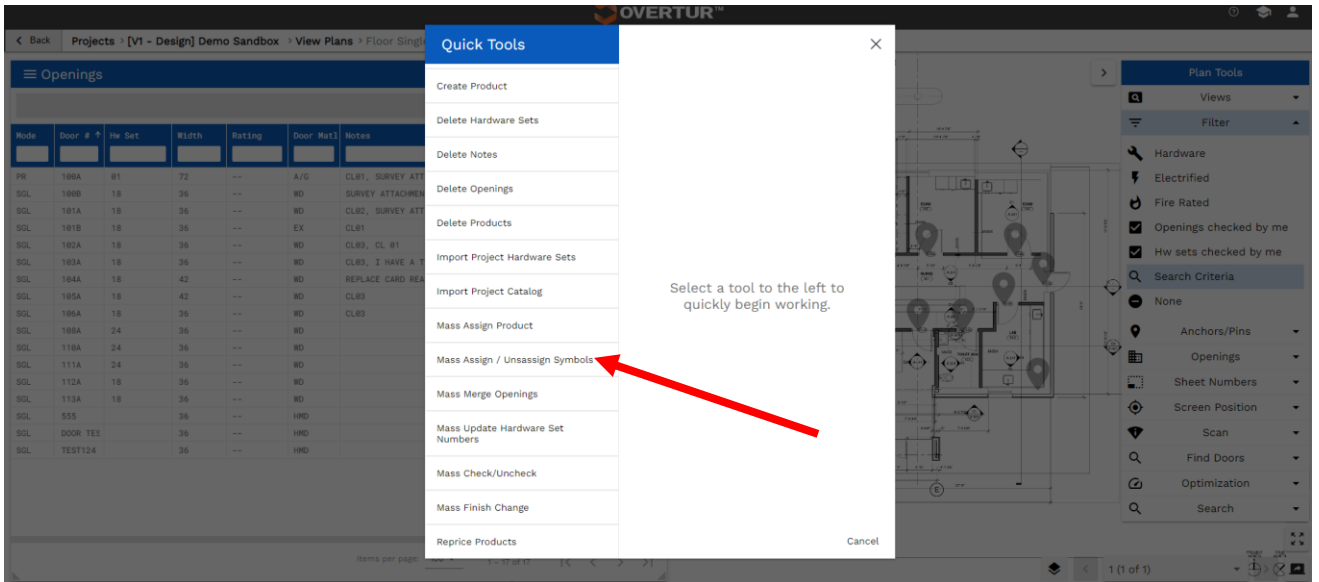
- o New Screens

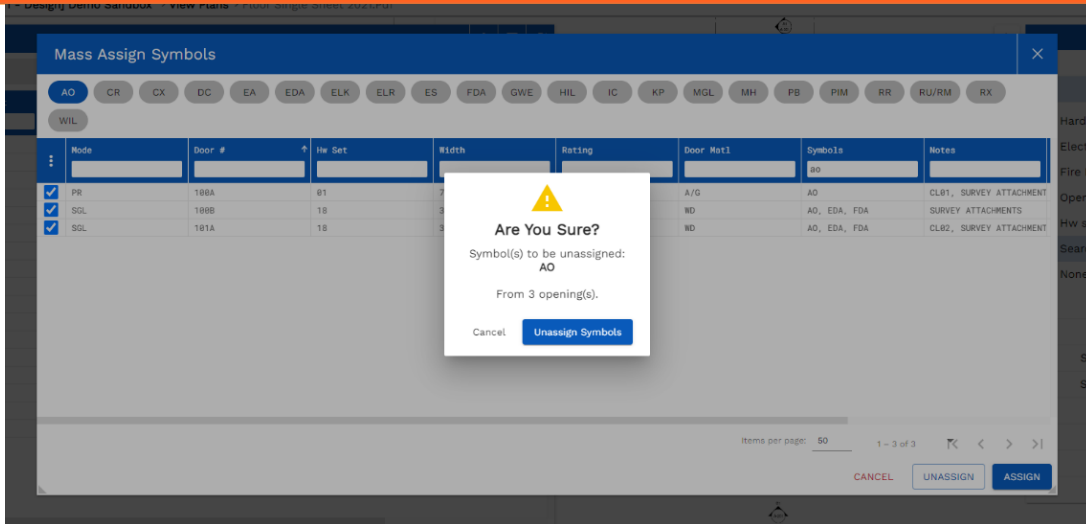


Latest changes in Overtur as of April 21, 2023

New Features

3. There is a new feature that allows users to mass assign and unassign symbols in View Plans.





NOTE: The “Are You Sure?” message only appears when mass unassigning symbols, it does not appear when mass assigning symbols.

4. New symbols have been added: FDA (Fire Door Assembly), EDA (Egress Door Assembly), and PS (Power Supply).

Fixes

1. There was a bug in the autofill suggestion for the “Market” field dropdown in the Phase Details screen. This has been fixed.
2. There was a bug in the Punch report where doors that were passed were showing up in an issues only report. This has been fixed.

Latest changes in Overtur as of March 2, 2023

New Features

5. The export for Plangrid from Overtur was not working as expected for Plangrid user. The export has been updated to work properly for Plangrid users.
6. Site Survey, Install, and Punch reports created in the mobile app and now be created and downloaded in Word using Overtur web.
7. Product Installation status of Category has been updated to capture the installation status for a product as “Preinstalled”, “Installed”, or “Not Started”. details viewable at the opening level in View Plans

Fixes

3. When some users updated the status and stage of a project, then published the project, the status was not updating on the main project dashboard, and the status and stage were not updating under manage versions. This has been fixed.

Latest changes in Overtur as of February 9, 2023

New Features

8. The following new features are for Allegion users only.
 - a. Users can now create a “My Collaboration Team” from their avatar on the top right of the Overtur screen.
 - b. An alert will notify a user to set up their collaboration team when creating a new project.
 - c. When creating a new project, if “I Need Help” is selected, that user’s collaboration team will automatically be added to the project.
 - d. Users can now add their collaboration team from the collaboration window on a project’s main screen.
9. The Set Preferences tile has been removed from Overtur. Preferences can be set by a user on the My Dashboard page. These preferences are for each individual user and not applied to a project.
10. The Manage Spec tile now is called Manage Phases. Also, on the project front page the Edit Details button has been renamed to Phase Details.

Fixes

4. When mapping a door schedule column, pressing a letter to find a column name to map data to was not moving the list down to names beginning with that letter. This has been fixed.

Latest changes in Overtur as of December 8, 2022

New Features

1. The .XML export from Overtur now only includes hardware sets and products that are assigned to openings. Hardware sets and products that are not assigned to an opening will not show up on the report.
2. When mapping data on a door schedule that came from the Overtur for Revit plugin, the tab labeled "Overtur – Deleted Doors" will now default to being unchecked.
3. Most of the report names in the Run Reports tile have been renamed. See below for a table showing the old names and new names.

CURRENT NAME	NEW NAME
CalifDSASpec	California DSA Specification (Word, PDF)
Canadian Hardware Schedule	Canadian Hardware Schedule (Word, PDF)
Catalog Cuts	Catalog Cuts (PDF)
Door by Door Schedule - ANZ	Door by Door Schedule (Word)
Door Hardware Installation Estimate	Door Hardware Installation Estimate (Excel)
Door Hardware Report - ANZ (Excel)	Promaster Export - Door Hardware List (Excel)
Door Index Revision Report	Door/Hardware Set Index Revision Recap (Word, PDF)
Door Report - ANZ (Excel)	Promaster Export - Door List (Excel)
Door Schedule	Door Schedule (Excel)
Door Schedule (Word)	Door Schedule (Word, PDF)
Door/Hardware Index	Door/Hardware Set Index (Word, PDF)
Electronic Data Summary	Electronic Data Summary (Excel)
Hardware Schedule	Hardware Schedule with Pricing (Word, PDF)
Hardware Schedule Excel	Hardware Schedule with Pricing (Excel)
Hardware Sets	Specifications and Hardware Sets (Word, PDF)
Hardware Sets Revision Report	Hardware Sets Revision Recap (Word, PDF)
Horizontal Schedule	Horizontal Schedule (Excel)
Installation Session	Installation Session (PDF)
Note Report	Notes (Excel)
Pre-construction Quantity Report	Pre-construction Quantity (Excel)
Pricing Recap	Pricing Recap by Product (Excel)
Product Summary - ANZ	Product Summary (Word)
Punch List	Punch List (PDF)
Quantity Summary	Quantity Summary (Excel)
Quote Products Report - ANZ (Excel)	Promaster Export - Quote Products List (Excel)
Site Survey Report	Site Survey (PDF)

4. When creating a revision report in the Run Reports tile, the versions being compared will now be displayed.

5. In the Audit Specification tools in View Plans, users now have an option to renumber the hardware sets based on the door number sorting.
6. Non-Allegion users with Editor status can now use the Hide Anchors / Pins option in View Plans > Plan Tools > Anchors / Pins.

Fixes

1. There was a bug in map data that caused the data to map when the Validate button was pressed. This has been fixed.

Latest changes in Overtur as of November 11, 2022

New Features

1. Allegion Overtur users can now collapse and expand articles when using the semi-automated specification tool.
2. Allegion Overtur users can now use common Word-like formatting functions when using the semi-automated specification tool.
3. All users can now choose specification section option 08 17 13 when creating a hardware sets report.
4. All users can now use the new overlay tool in View Plans to overlay different versions or types of drawings and see the differences between the sheets.

Fixes

Latest changes in Overtur as of October 13, 2022

New Features

1. All users can use a new window in View Plans titled Assign Notes. This window will work like the Assign Hardware Sets and Add Product windows. Users will be able to create and edit notes in the Snippet Manager. The Assign Notes window will have two tabs; one for My Opening Notes which will include the notes for each specific project and a second tab for Note Snippets which are notes that will be available for all projects.

Fixes

1. In the assign hardware set window, some users were experiencing problems with the data not refreshing correctly. This has been fixed.

Latest changes in Overtur as of September 21, 2022

New Features

1. Users can now select an option in the hardware sets revision report to only show revised sets.
2. Non-Allegion users can now export a hardware set to another project.
3. Non-Allegion users can now select a reference catalog in the add product window and a reference project in the assign hardware set window.
4. Users can now select to view a created-on date field in the opening schedule.
5. Users can now select to view a Revit door field in the opening schedule.

Fixes

1. There was a page that was freezing when the user was deleting anchors - this has been fixed.

Latest changes in Overtur as of September 9, 2022

New Features

1. Users can now display a column in the Products Schedule titled Obsolete to identify Obsolete products. Clicking on an Obsolete product will provide Update details including a recommended replacement. An Obsolete column has been added to the Products tab in Manage Spec. In the Add Product window a red X identifies an Obsolete product.
2. Users can now hide all Anchors/Pin via Plan Tools. The Anchor/Pin will display if an opening is selected.

Fixes

1. None.

Latest changes in Overtur as of August 26, 2022

New Features

1. The Overtur support form has been updated to be quicker and easier to fill out to request support.
2. When going into the View Plans tab, the columns are now filterable and sortable to allow users to find their projects more quickly.
3. When viewing openings in view plans, the symbols column will now only display the actual symbols instead of the description, and they will be in alphabetical order.
4. A new feature has been added to allow automatic import of selected sets from another project.
5. A new rule has been added to remove the filter in the reprice products window that carries over from the products schedule.
6. A new tool has been added to allow users to draw a box around anchors to be deleted or draw a path over anchors that need to be deleted.
7. Users can now type ahead to search in the country field in more details and find collaborator in auto spec > preferences.

Fixes

1. There was a bug that was preventing reference catalog products from loading properly into the project - this has been fixed and now reference catalog products will properly show up.
2. There was a bug that when a user clicked on a modified door in track changes that Overtur took the user to a undefined plan - this has been fixed to take the user to the correct plan.

Latest changes in Overtur as of August 4, 2022

New Features

1. When importing hardware sets from another project into the current project, the user now has the option to add a prefix or suffix to those hardware sets.
2. When importing a project, users can now select specific products to import or import all products.
3. In the horizontal schedule report, an option has been added to include keying notes in the report.
4. Disclaimer statements have been updated for the following reports: Hardware schedule excel, pricing recap, and hardware schedule.
5. Allegion users only: A tool tip has been added when hovering over the review report button when using the auto spec tool.
6. Allegion users only: When using the auto spec tool, clicking the + icon on the left side of the page will locate paragraphs in the proper place on the right side of the page.
7. Allegion users only: When user clicks choose specification, that same project will persist for future sessions. If the user needs to make change and hasn't opened the project 3 months, the chosen spec will remind them of the spec template used and allow more accurate editing.

Fixes

1. The report filters for Select Specific Opening and Select Specific Products were not working properly. This has been fixed.
2. When selecting specific openings in the report content tab, applying filters, then checking the top left corner to check all rows in the table, then unchecking the top left corner to uncheck all rows was not working properly. This has been fixed.

Latest changes in Overtur as of June 28, 2022

New Features

1. Support has changed from internal CRM system to a 3rd party support software. No changes to the support form or how to submit it.
2. In Reports, we added the text “Not Used” in the report when unused hardware sets are selected to be shown for the Hardware Set Revision Report.
3. A change was made so a collaborator is unable to make changes to a hardware set when the project is in a published state.

Fixes

1. None.

Latest changes in Overtur as of June 3, 2022

New Features

1. In the Door Material options users can now select HC (Hollow Core) and W&G (Wood & Glass).
2. A new feature was added to allow users to mass change hardware set numbers to add or remove a prefix and add or remove a suffix.
3. All Allegion collaborators on a project will now be notified when ODS completes their work on a project.
4. When a hardware set report is configured and the Show ANSI Catalog Number is selected, there is now an option to also select to show the manufacturer (MFR) for products.
5. In the Door Index Revision report a new feature has been added to list symbol abbreviations in alphabetical order.
6. In the Door Index Revision report the electrical icon (lightening bolt) has been added.
7. In the Auto-Specification tool, a Quick Tools option has been added to add electrified paragraphs.
8. In the Auto-Specification tool, a Quick Tools option has been added to add all existing conditions paragraphs instead of removing.
9. In the Auto-Specification tool, a Quick Tools option has been added to add all paragraphs dealing with lead.

Fixes

1. There was a bug that did not allow a collaborator with the role of Hardware Consultant Editor the ability to change a hardware set while the project was published. This has been fixed.

Latest changes in Overtur as of May 12, 2022

New Features

1. In the Auto-Spec tool, selected text now shows up in a blue font when the user hovers over the Delete button.
2. In the Auto-Spec tool, a date field has been added showing the most recent date the Allegion Master Spec was updated.
3. Collaborators with the status of Reviewer now have access to Mass Check/Uncheck in the Quick Tools in view plans.

Fixes

1. Users were getting errors when using express mapping for the Active Width and Inactive Width fields. Those fields will no longer map when using express mapping.
2. Users were experiencing Issues with Fixed Notes when using the copy to Excel function. This has been fixed.

Latest changes in Overtur as of April 21, 2022

New Features

1. When a user clicks on the learning cap in Overtur they are now taken to the Help Center instead of seeing the drop-down menus.
2. On the projects screen a new column called “Architectural Project #” has been added to allow users to search for projects using the architect’s project number.
3. In the Overtur Auto-Spec tool, users can now create and import preference templates, and hot keys have been added for Undo and Delete functions.
4. Non-Allegion users now have access to the Hardware Set report, but not the Auto-Spec tool.
5. In the Auto-Spec tool the outline for the paragraphs has been made lighter.
6. In the Hardware Schedule Excel report, additional formulas have been added to help users customize the report.
7. In the Project Reports tab in the Reports tile, a new column called Description has been added to allow users to see what report the template is based on.

Fixes

1. In the Site Survey reports the footer was incorrect. This has been fixed.
2. When trying to view sample reports users were getting a pop-up error. This has been fixed.
3. Users were getting an error when trying to open a custom cut sheet in the Electronic Data Summary report. This has been fixed.

Latest changes in Overtur as of April 1, 2022

New Features

1. In the reports tile a change has been made so text now reads “Template” instead of “File” to reflect that the user is creating a report template.
2. In the reports tile, a new column has been added called “Report Type” to the My Report Template tab to reflect the type of report the template is based on.
3. The symbol field has been added as a selectable option when creating a Door Index Revision Report.
4. Added an option to display a legend in the Hardware Sets, Hardware Sets Revision Report, Door/Hardware Index and Door Index Revision Reports.
5. A pop-up message will now appear when a user downloads a report that offers pricing, and the prices are out of date for the Pricing Recap, Hardware Schedule, and Hardware Schedule Excel reports.
6. Non-Allegion users can now access the Hardware Set report.

Fixes

1. NONE.

Latest changes in Overtur as of March 17, 2022

New Features

1. NONE

Fixes

1. The Restricted Project notice has been removed from the banner due to voice of customer requests.
2. There were issues preventing the Punch export from successfully running. This has been fixed.

Latest changes in Overtur as of February 24, 2022

New Features

1. In the Overtur Auto Spec tool products in the left-hand panel and now linked to their respective article in right hand panel.
2. A collaborator on a project with the title of Project Owner can no longer change their status to Reviewer.
3. Sensitive or Restricted projects are no longer visible for other users to request access so that the projects can stay more secure.
4. Collaborators can now see a visual indication that the project has been marked as Sensitive or Restricted, so they understand the project needs to be treated differently.

Fixes

1. There was a bug that prevented collaborators with an email address of "first.last@allegion.com" from being added to a project. This has been fixed.
2. The saved filters on the plan tools menu In View Plans were not saving. This has been fixed.

Latest changes in Overtur as of January 21st, 2022

New Features

1. Provided filtering options for Hardware Sets Revision Report - Exclude Displaying Modifications For: Comments, QTY, UOM, Description, Catalog Number, Catalog Cut Icon, Finish, MFR, Remarks and Operation.
2. Added Legend to Hardware Set and Hardware Set Revision reports for: Link to catalog cut sheet and Electrified opening.
3. Updated the PDF viewer in Reports.

Fixes

1. Updated the click sequence for the table for Selecting Specific Openings/Products.

Latest changes in Overtur as of November 5th, 2021

New Features

1. The following updates were done to the Site Survey report:
 - a. A new site survey cover page.
 - b. Changed the Allegion logo to the Overtur Logo.
 - c. Changed the # <doornumber> format to DOOR # <doornumber> format.
 - d. Added OPENING INFORMATION: includes Size: (Width x Height x Thick), Door Matl, Frame Matl, Rating.
 - e. Added SESSION NAME.
 - f. Changed "Last Updated" to CREATED BY: including Surveyor's full name, date & time.
 - g. Added the Operational Description if it exists.
 - h. Added all the items in the "Notes" section for every survey session across multiple versions of an opening sorted latest first.
 - i. Photos now land in sequence taken.
 - j. Included the image title that a user gives to an image in (any) mobile tool that is reflected below the image in the report and is viewable with the photo in any mobile tool.
 - k. Removed "Survey Attachments" in the notes section.
 - l. Removed the "Prepared By" and "Created with PlanGrid" verbiage from the report footer.
2. The following updates were done to the Punch report:
 - a. Provided a separate Site Survey Cover Page.
 - b. Changed the Allegion logo to the Overtur Logo.
 - c. Changed the # <doornumber> format to DOOR # <doornumber> format.
 - d. Added OPENING INFORMATION: includes Size: (Width x Height x Thick), Door Matl, Frame Matl, Rating.
 - e. Added SESSION NAME.
 - f. Changed "Last Updated" to CREATED BY: including Surveyor's full name, date & time.
 - g. Added the Operational Description if it exists.
 - h. Added all the items in the "Notes" section for every survey session across multiple versions of an opening sorted latest first.
 - i. Photos now land in sequence taken.
 - j. Included the Image title that a user gives to an image in (any) mobile tool that is reflected below the image in the report and is viewable with the photo in any mobile tool.
 - k. Removed "Survey Attachments" in the notes section.

3. The date and time format for the Created On field In View Plans > Notes was an incorrect format. This has been fixed

Latest changes in Overtur as of October 12thth, 2021

New Features

1. A new design for the creation and customization of reports was released.
2. A new tool for the semi-automation of a specification based on products in hardware sets in a project was released.

Latest changes in Overtur as of October 4thth, 2021

Fixes

1. In the Add Product window there was a bug that was allowing the products to not line up with their respective type. For example, after hinges were added to a hardware set the selection type would move from Hang to Lock, but the hinges would still be visible. This has been fixed.
2. In the Site Survey report sessions were not printing in the report if an opening did not have a corresponding note. This has been fixed.
3. In the Site Survey report photos were being displayed twice. This has been fixed.

Latest changes in Overtur as of June 25th, 2021

New Features

1. In the Hardware Sets report a new option called “087100 Door Hardware – Streamlined” is now displayed on the Options tab under the Master Specification section.
2. Express Mapping has been updated to now include Wall Rating data when that data is present in the door schedule that is being mapped.
3. In the Hardware Set report a new filter has been added to allow filtering on the Coordin8ID data.

Fixes

1. In the Add Product window there was a bug that was allowing the products to not line up with their respective type. For example, after hinges were added to a hardware set the selection type would move from Hang to Lock, but the hinges would still be visible. This has been fixed.

Latest changes in Overtur as of May 14th, 2021

New Features

1. A new drop-down menu has been added to the project creation form that requires the user to select the type of project being created.
2. A new feature in the plan tools allows users to customize the position on the screen where pins or anchors show up when selected on the openings schedule.
3. A new function asks users to verify that they want to convert all pins to anchors and confirms when that action is complete.
4. A new feature has been developed allowing users to map "Wall Rating" into a project so that they can compare the opening rating with the wall rating to find potential conflicts in the architect's door schedule and project.

Fixes

1. There was a bug where users can't find selected openings or see changes in Report - this has been fixed so selected openings and changes show up on applicable reports.
2. There was a bug preventing emails from being sent out when a collaborator was added - this has been fixed.

Latest changes in Overtur as of April 22nd, 2021

New Features

1. A new version of the Overtur Revit plugin, Overtur4Revit v3.0.0.5, was released. The following are the improvements with the new version:
 - m. Provides automatic Pin location in the Overtur View Plans application.
 - n. Instead of locating based on the Door number, Revit GUIDs are used for an absolute Pin placement.
 - o. Architects must use the latest version 3.0.0.5 before this can be possible.

Fixes

1. Mobile - Upgrading to a more robust database to handle higher volume projects more efficiently.
2. Mobile - Beefed up camera plug in to reduce camera crashes, adding speed & stability.
3. Web - The Summary Panel Due Date Selection was not functioning properly; this has been fixed.
4. Web - The Note doesn't populate in the appropriate screen until you click out of the note creation window; this has been fixed.
5. Web - The Last Hardware Created was incorrect and has been fixed to show the actual last number of a hardware set created.
6. Web - Some users were experiencing problems causing the Catalog Cut Sheet report to not print; this has been fixed.

Latest changes in Overtur as of March 19th, 2021

New Features

1. A new hot key has been added to get to the Create Hardware Set window much faster. Now pressing Alt + W simultaneously will open the Create Hardware Set window and place the cursor at the Hw Set # field.
2. New formulas have been added to the Pricing Recap Report. A user can edit the Extended Qty (even if 0) and the Unit Price (even if 0.00) and the Extended Price, Sub Totals and Grand Totals will update correctly with formulas.
3. In the Plan Tools new features called Begin Quick Anchoring and Convert All To Anchors have been added in the Anchors section. This will help to speed up the process of converting pins to anchors in projects.

Fixes

1. There was an issue where the hardware set revision report won't run when the project has duplicate products. This has been fixed.

Latest changes in Overtur as of March 5th, 2021

New Features

1. A new feature has been added to allow users to mass check or uncheck all openings from the audit menu. When checking all the openings, the user who has checked all the openings will have their name added to the column titled "Checked By". When all openings are unchecked, the openings will all be unchecked unless the openings have been checked by another collaborator, then they will remain checked and the user who checked them will be named in the "Checked By" column.
2. When creating anchors in the Plan Tools, additional opening attributes have been added to allow users to filter the openings in the Select Opening window that pops up.
3. Clicking "Checked by Me" filter in View Plans, in Plan Tools, now only highlights doors in green when the logged-in user's name is contained in the "Checked By" field in the Opening Schedule. If a door was checked by collaborators other than the logged-in user, those anchors will not turn green unless the logged-in user also had checked the opening(s).
4. When viewing the My Dashboard screen, the header row has been frozen to allow it to be seen while scrolling down.
5. A new Filtering option has been added to the Track Changes screen. This new Filtering option allows users to select a specific attribute(s) to see changes only to those attribute(s). When the "only show changes for selected fields" option is selected, it will ignore the Filter By buttons and will only show changes for the selected attribute(s).

Fixes

1. When in Plan Tools, trying to use the Update Openings feature was not working properly. This has been fixed.
2. The Plan Tools search box was not working properly, and searches typed into other fields were showing up in the Plan Tools search box when they shouldn't have. This has been fixed.

Latest changes in Overtur as of February 12th, 2021

New Features

1. A new feature has been added to allow exporting of individual hardware sets from one project to another. In View Plans, while viewing a single opening or hardware set, a new button called Export Set will be visible to allow exporting that single hardware set to another project which you are a collaborator on.
2. A new feature has been added to Track Changes to allow a user to check a new box titled Check All Bold Fields. Selecting this will automatically check all of the bold fields in Track Changes instead of having to scroll through and check them individually.
3. When a user is in Map Data mapping values, in a specific opening in View Plans and when creating an opening in View Plans, and clicks on the dropdown arrow of Mode, Door Material, Frame Material, Door Panel Type, Hand, Space Type, Storm Label, Swing Type and Transom they see both the value (e.g. PR) and the corresponding description (e.g. Pair).
4. Province / Territory has been added State in the Summary window. Also, this field has been revised from a dropdown of the U.S. states to a free form field so other countries can add their province or territory as needed.

Fixes

1. Some users were experiencing a bug where text entered in free form text fields in the opening schedule was disappearing. This has been fixed so all free form text stays as typed.
2. When duplicate products were added to a hardware set, the revision report was only picking up one of those products. This has been fixed so both products will be visible.

Latest changes in Overtur as of January 14th, 2021

New Features

1. A new report called Door Hardware Installation Estimate was added under reports. This new report allows the user to run a report to estimate installation costs by adding an estimated hourly wage to use as a calculation with estimated installation hours and quantity to get an estimated installation cost.
2. The Overtur logo was added to the catalog cuts report.
3. New hot keys were added for use while in view plans. Alt + K will check or uncheck a specific opening and Alt + Q will open or close the quick tools menu.
4. In the hardware set report and hardware set revision report, under hardware set (fields) > attributes, there is an option to show list of manufacturers. If selected, this will show a table before the first hardware set of all manufacturers used in the project listed alphabetically.
5. In track changes, under the hardware tab, the icons have been removed and words have been added to describe the changes that have been made.
6. In the hardware set report, 281000 Access Control has been added under the attributes to be selected for a master specification.
7. While in any view plans screen, a new hotkey, Alt + N, will open the create note window so a note can be added more quickly.
8. The current version number of a project has been added before the project name in the breadcrumb and tab.

Fixes

1. The search field in share files now will return files that match the search criteria.
2. There was a problem with the product window where the category was not matching the products, specifically for push / pull products. This has been fixed.
3. There was a problem where clicking on a deleted door in track changes was returning an error. This has been fixed so now clicking on a deleted door will now display a message that says the door has been deleted.
4. When trying to overwrite the ref# for a hardware set, it was not saving. This has been fixed to allow the user to overwrite the ref# for a hardware set.
5. The coordin8id selection for custom products was not saving. This has been fixed so a coordin8id for custom products can now be used.
6. In manage spec, the previous spec versions now are listed in descending order, not ascending.
7. In map data, invalid values in the door schedule will now prevent a schedule from being submitted for processing, thus eliminating the failure to report error without validation.

Latest changes in Overtur as of December 3rd, 2020

New Features

1. Overtur support tickets for users in Australia and New Zealand will now be routed to Cases in the ANZ instance of Dynamics.
2. In the collaborator panel more information has been added about each collaborator on the project and the flow when using the invite button has been revised for a better user experience.
3. An email can now be sent to a single collaborator or all collaborators on a project from a button in the collaborator panel.
4. There have been several buttons and headers that have changed visually to match new Allegion Phoenix design standards.
5. Under the Learning Cap, the Overtur 101 courses have been updated, a new Custom Views video has been added under Overtur Demonstration Videos, and new Mobile videos have been added under Mobile.
6. Overtur users can now create and upload/add a custom cut sheet via a PDF document.
7. New icons have been added to allow navigation to the first/start or last/end pages when navigating through multiple pages in View Plans, Manage Spec, My Dashboard.
8. The "Download Punch Report" button is no longer visible in the punch tile. Users can download the report via the reporting tile.
9. In Track Changes, when clicking on an opening, a new window of Overtur will open where the opening in question can be viewed without leaving the track changes screen in the other window.
10. A new Express Mapping button has been added that can be used to significantly reduce the amount of time required to map a project.
11. In the Site Survey Report - Project Notes are located at the beginning of the report with more clearly laid out information.
12. An updated plugin for Revit has been developed and released. All Revit users who use the Overtur plugin will need to install this new version of the plugin. The latest Overtur for Revit Plugin includes new features for the design community for room and door renumbering and exporting schedules as well as streamlining existing features for sending and retrieving door opening information into Overtur. There will also be a new link provided to take users to the iDig Hardware page.

Fixes

1. A problem with duplicated collaborator names was fixed so that only a single collaborator name for a non-Allegion user will show up.
2. In track changes a bug was fixed that did not allow a previous version hardware set to show up if that set was deleted.
3. A problem with quantities of product showing in track changes was fixed.
4. In reports, when selecting select specific openings, sometimes there would be no openings to select based on the filters. This has been fixed.
5. The DHI category of 25.111 has been moved from the all category to the lock category.
6. When adding a reference catalog to the add product window, the products in that reference catalog will now be immediately visible.
7. The timing out issues in map data from the Revit update process have been resolved.
8. Some reports were not successfully showing a preview – this has been fixed.
9. Newly uploaded plans will now always appear in the plans list.
10. In track changes, the hardware set number field is now correctly tracking changes to that field.
11. The invite collaborator button is now disabled until a collaborator has been selected or a name entered.
12. In mobile, opening attachments now save when editing an opening after creating a new session.
13. Photos will now correctly download into the site survey, install, and punch reports.
14. Images uploaded to openings while in the punch tool in the mobile application will now sync correctly and be viewable in Overtur web.
15. Doors created in the site survey mobile tool were not searchable – this has been fixed.
16. In mobile, the plan pages are now correctly identified.

Latest changes in Overtur as of September 22nd, 2020

New Features

1. New Electronic Data Summary Report.
2. The Horizontal Schedule Report has been updated.
3. Resolve Duplicate Hardware Set improvements.
4. All Opening Schedule fields that have data are now bold.
5. When an Overtur mobile user selects a published project, the user should be given some form of notification that the project is published, and new version would need to create on the web before the user can sync a survey.
6. Mapping has been modified to not allow a user to advance from the "Field Mapping" screen until mapping the "Door Number" field at a minimum. This makes sure a user is unable to create all doors with SYSGEN door numbers because of clicking through the process too fast.
7. File types .dll and .exe can no longer be uploaded into Overtur.
8. The Punch Tool has additional flexibility so users can select what data they want to include in reports such as "Flagged" and "Passed".
9. The blue bubbles in a specific opening, hardware set, product, or note no longer include the Mark numbers – they just show the opening number.
10. The clickable areas In the View Plans schedules have been fine-tuned for a better user experience.
11. The radial tools menu has been replaced with a menu list organized alphabetically to make it easier to find functions.
12. A new role has been created called General Contractor. The General Contractor role has the same rights as the current Architect role.
13. Comments entered on the create project form are now added as Project Notes so they can be easily reviewed.
14. In Mobile, when doing a site survey and looking at the view plan screen, Overtur will now return to the last opening surveyed on the plan after completing a review of that opening.
15. When a hardware set is created with no products added, the comments, remarks, and operation of the set will be displayed.
16. A Project Owner's rights now cannot be changed by collaborators.
17. A new "+" button has been added in Mobile to provide easy access to the take photo, upload photo, add note, and add voice memo actions.
18. The following changes have been made In the Track Changes window:
 - a. The top row in the right-side panel is now frozen.

- b. The scroll bar at the bottom is now frozen and always in view when there are enough columns to require the use of the scroll bar.
 - c. The left side panel is now larger to minimize or eliminate the need for scrolling.
 - d. A Status column has been added on the right-side panel. The Icons have been removed and replaced with the words Modified, Unchanged, Added, and Deleted.
 - e. The row for a modified opening has been changed from no color, to blue.
 - f. Old values have changed from the red font with limited information, to a new format with additional information.
 - g. Added items per page options and a page advance button.
19. Phase has been added as a filter in the Hardware Sets and Hardware Sets Revision reports.
20. For Allegion users, when clicking on a CRM opportunity number in Overtur, a new CRM page will open with the opportunity information visible.
21. The Review Mappings screen has been removed from the mapping process because the import screen shows the same and more information. The Review Mappings screen was an unnecessary step that has been removed.
22. Several changes have been made inside of Map Data. Here is a list of those changes when a user opens Map Data:
- a. Send Door Schedule Data to Overtur has been renamed Import Opening Data
 - b. Added new column “uploaded by” to the right of the current Uploaded column.
 - c. Renamed Sent to Overtur to be Imported.
 - d. Added new column Imported By to the right of Imported.
 - e. Renamed Retrieve Door Schedule Data from Overtur to Export Data.
 - f. Renamed Create Retrieval button to Create Export.
 - g. Added new column Exported By to the right of the Exported column.
 - h. Renamed Retrieved into Revit to Revit Retrieved.
 - i. Added new column – Revit Retrieved By.
23. Added 8 new symbols in the symbol panel (HIL – Hardwired Intelligent Lock; WIL – Wireless Intelligent Lock; RU/RM – Remote Undogging, Remote Monitoring; PIM – Panel Interface Module; GWE – Gateway; ELR – Electric Latch Retraction; MGL – Magnetic Lock; ELK – Electrified Lock)
24. In Mobile, when a user clicks sign out, a warning message will appear for the user to confirm they really want to sign out.

Fixes

1. When mapping a door schedule, all fields that require a value selection from a validated list can be done during the mapping process.
2. Mass Finish Change Fail - Schlage L Series mortise locks would not mass finish change. This has been fixed.

3. Non-Allegion user can't open PDF in View Plans in Chrome - Some non-Allegion users were not able to open files. This has been fixed.
4. Share Files let's some users upload a file and others not - Overtur users that had updated to the latest version of Chrome were experiencing problems uploading files. This has been fixed.
5. Update Add Product - After removing a Reference Catalog from a project, none of the other catalogs would be highlighted. This has been fixed so now the catalog on the left will be highlighted.
6. Update default quantities - Default quantities for the following products were incorrect and have been fixed: 488S in PR mode, 8303AA in PR mode, FB458 in PR, DAP, and UEP modes.
7. Mobile, Add Project Note button not anchored - In iOS, the add note button would not stay anchored at the bottom of the screen. This has been fixed.
8. Mobile, Uploaded file cannot be opened - Uploading a file in Mobile and then trying to open that file resulted in the file not opening. This has been fixed.
9. Mobile, user data is wiped when logging out of mobile app – When working in the mobile app, if a user signed out without syncing to web, their data would be deleted. This has been fixed so if someone signs out without syncing to web, their data will still be in the mobile app when they sign back in.
10. In track changes, the openings or hardware buttons will now highlight indicating what is showing on the screen.
11. When creating a hardware schedule excel report, and not checking the show pricing total box, the pricing was still showing on the report. This has been fixed.
12. In opening notes, users were unable to add an opening to a door number that did not have a letter, if other doors of the same number did have a letter. For example, if a project has doors 100, 100A, and 100B, a project note for 100A could be added, but then door 100 could not be added to that note. Also, if adding door 100B in the scenario above, 100B text would still show. This has hall been resolved.
13. When duplicating an SGL door, and changing the mode to PR, the PR door would get added to the same set as the SGL door. This has been fixed.
14. When trying to update the thickness of a door to 2.25 using the keypad on the keyboard, the decimal point would not work. Also, when copying the thickness from one opening to another opening the decimal would not paste. These have both been fixed.
15. In the hardware set revision report, filtering by Select Specific Openings was not working. This has been fixed.
16. In the Door Index Revision and Hardware Set Revision Reports, the sorting has been fixed to keep doors and hardware sets in order, regardless of whether or not they have been changed or deleted.

Latest changes in Overtur as of August 14th, 2020

New Features

1. Modify project emails title and verbiage - In notification emails, in some cases, the Project Name was surrounded by brackets ([]) both in the subject and body of the email. This has been changed so the brackets no longer appear in those emails.
2. Remove Audit Button from Managed Spec - There was no need for the Audit button in Manage Spec because it already lives in the Radial Menu in View Plans.
3. Change "Contact Your Spec Writer" - Changed anywhere Overtur says to "Contact Your Spec Writer" to say contact your "Openings Consultant".
4. Auto-update existing opening Overtur IDs to match Revit doors being imported - With this new feature, a new door schedule from Revit will be merged with existing doors In Overtur that have matching door numbers, and the existing hardware sets, notes and other data will remain.
5. Correct how Map Data handles doors listed in Deleted Doors tab - Overtur will now only delete doors that come from Revit models that have already been mapped into Overtur. If a door schedule is sent from a different Revit model, existing doors from the other models will not be deleted.

Fixes

1. Mass Finish Change Fail - Schlage L Series mortise locks would not mass finish change. This has been fixed.
2. Non-Allegion user can't open PDF in View Plans in Chrome - Some non-Allegion users were not able to open files. This has been fixed.
3. Share Files let's some users upload a file and others not - Overtur users that had updated to the latest version of Chrome were experiencing problems uploading files. This has been fixed.
4. Update Add Product - After removing a Reference Catalog from a project, none of the other catalogs would be highlighted. This has been fixed so now the catalog on the left will be highlighted.
5. Update default quantities - Default quantities for the following products were incorrect and have been fixed: 488S in PR mode, 8303AA in PR mode, FB458 in PR, DAP, and UEP modes.
6. Mobile, Add Project Note button not anchored - In iOS, the add note button would not stay anchored at the bottom of the screen. This has been fixed.
7. Mobile, Uploaded file cannot be opened - Uploading a file in Mobile and then trying to open that file resulted in the file not opening. This has been fixed.

8. Mobile, user data is wiped when logging out of mobile app – When working in the mobile app, if a user signed out without syncing to web, their data would be deleted. This has been fixed so if someone signs out without syncing to web, their data will still be in the mobile app when they sign back in.

Latest changes in Overtur as of June 27th, 2020

New Features

1. New and greatly simplified Create Project form - Allows user to quickly create an Overtur project, to select if they would like help from Allegion, and to select an Allegion contact or have one provided. Also now available in the mobile app. (Note: For Allegion hardware consultants, the option to Migrate from SpeXtra has been moved to a separate button and is no longer part of the Create Project dialog.)
2. The Export XML button will now only export to ProMaster. This was done as requested by Allegion leadership.
3. A new version of the Revit Plugin is being released and includes many improvements and enhancements. Most notably, the Revit plugin is now compatible with Revit 2021. The new Overtur Plugin for Revit version is 2.3.0.1.

Fixes

1. When a user added a new opening while doing a site survey and synced the information to Overtur web, the Qty showed "0" instead of "1". This has been fixed so the default quantity is 1.
2. In the Hardware Sets and Hardware Sets Revision Reports the ANSI catalog number was not appearing after the Description when selected in the report configuration. This has been fixed.
3. Numerous Overtur users were reporting performance issues while performing various tasks and at various times of the day. With this release, there have been many improvements to Overtur to increase the overall performance.
4. Reports would not run if Openings to Include or Products to Include options were selected, but no openings or products were selected. This has been fixed.
5. Notes were being deleted when an opening was deleted if the note was only assigned to that specific opening. This has been fixed.
6. Users that are Hardware Consultant collaborators were unable to delete a door that had a note attached to it that they did not create. This has been fixed.
7. The summary panel comment field was limited to 180 characters and did not match the comment field on the create new project form's 255 characters so some characters would not show up in the summary panel. This has been fixed so the summary panel comment field now has the same 255 character limit as the create new project form's comment field.

Notes

1. Hardware Consultants will no longer see a Reference Catalog in the Add Product window for new projects until one is manually added.

Latest changes in Overtur as of May 15, 2020

New Features

1. The Migrate from Spextra button was moved from the create new project form to the dashboard next to the new project button.
2. In the Hardware Set Revision Report users can now use the Openings to Include feature to select which openings to see in the report.
3. The learning cap has been redesigned to add drop down menus for easier searching of materials.
4. The field called Key Set Symbol was changed to Keying Notes so it would not be confused with terminology in the future Keying release of Overtur.

Fixes

1. Users were getting a spinning wheel error when bookmarking the log in page in their favorites. This has been fixed.
2. Users were seeing improper sorting of columns on the My Dashboard page. This has been fixed.
3. Users were seeing the User catalog being skipped when looking for products to add to hardware sets. This has been fixed so Overtur searches catalogs in the correct order.
4. Users were experiencing data being deleted from Remarks, MISC 1, and Scratch fields in the Openings schedule. This has been fixed.
5. Users were having problems with all hardware sets loading in Track Changes. This has been fixed.

Latest changes in Overtur as of April 27, 2020

Fixes

1. Users were only getting the table headers and everything else was blank in the door index revision report. This has been fixed so the report now displays the proper information.
2. Users were seeing unnecessary decimal points in the quantity field in the mapping tool. This has been fixed so users will see 1, 2 or 3 as a Qty and not 1.000, 2.000 or 3.000.

Latest changes in Overtur as of April 24, 2020

New Features

1. Overtur Mobile - The **Site Survey** tool has been added which allows users to capture existing conditions onsite. Users can add, remove or duplicate openings in the field and produce a report with opening information, notes and images

Fixes

1. Sometimes users would not see the banner on the top left of the Overtur screen telling them about new releases, warning about downtime, or the possibility of losing data. That banner has been modified to be more noticeable for these types of events and it can also have different levels of notification.
2. In map data, users would experience a mapping failure if fields had some special characters. The handling of special characters has been fixed and users will get notified by the validation routine if there are special characters that need to be fixed. A change was also made to allow fixing specific characters on final review screen in map data.
3. Users had no way of telling if a retrieval file had been downloaded by the architect after it was made available. A modification was done to show the date and time when a file was retrieved, but it will not show who retrieved the file.
4. In the manage spec tile, it was confusing as to whether a project could be repriced or audited once it was published. A change was made to disable the reprice, audit, and publish buttons if a spec is published. Versioning the project will activate these buttons again.
5. In view plans, some users were having trouble opening dialog boxes and resizing or moving columns within the dialog boxes. The Overtur development team has made a change to the Overtur programming to fix this problem. This change should help the dialog boxes to open more consistently and reduce problems while resizing or moving columns.
6. Users were experiencing images not showing up on uploaded pdf's in view plans. This has been fixed.
7. Users have requested a report that shows the total of each product Item In a project. A new pre-construction quantity report has been created, and is available in the reports tile, to show this data.
8. The learning cap now has new demonstration videos and the Overtur 101 documents.

Latest changes in Overtur as of April 3, 2020

Fixes

1. When a new project was created, and the person creating the project listed themselves as the spec writer, they were being added as a reviewer (not editor), and the PC was never added. This has been fixed so the spec consultant is a hardware consultant and editor, and the PC is now being added.
2. There was a bug not allowing use of the check feature on a published project. This has been fixed.
3. There was a bug that would not allow a project to be versioned and imported inside of map data, if the latest version of the project had been published. This has been fixed.
4. When trying to delete many doors in map data, users would frequently receive an error message. This has now been fixed allowing large numbers of doors to be deleted in map data with no issues.
5. To speed up the file export process some changes were made to what data is being sent to Revit. Now, when creating a retrieval in map data, only the door number, hw set number, and Overtur ID are sent to Revit. Also, if no new Revit data is available and the retrieve button is pressed, a message will appear saying there is nothing new to retrieve.
6. There was a bug in track changes, and the hardware set revision reports, that allowed Experlogix catalog numbers and descriptions to show up instead of user catalog numbers and user descriptions. This has been fixed. Most of the issues with track changes should now be resolved, including reports.
7. There was a bug that was allowing editing of a published project. This has been fixed.
8. There was a problem with hardware set, and door index reports, that showed all items as deleted when the "play" button was used to create the report. This has been fixed.
9. There was a problem with sending data back to architects where Overtur was trying to send doors that had been manually added, after mapping the architect's door schedule, that did not have a Revit ID. This has been fixed so now when sending data back to architects, Overtur will not try sending non-Revit doors.
10. Several users had reported not being able to version their projects. Changes were made to fix this issue, so there should not be any issues versioning projects.

Latest changes in Overtur as of March 30, 2020

New Features

With this release we introduce Roles such as Hardware Consultant and Architect, and this in turns establishes your Rights within Overtur. In effect, this means that non-Allegion people can write specifications in Overtur as long as their Role in a given project is set to Hardware Consultant.

Any non-Allegion users who are looking for training on how to write a specification in Overtur should contact Sean King at sean.king@allegion.com.

We also added a list of Acronyms and Descriptions listed under Helpful Tips when you click on the Learning Cap.

Project Dashboard

1. Project Owner can change the Role and Status of any other collaborator on the project; note that only the project Owner can do this.
2. Any collaborator can modify the Status of collaborators with a matching Role (e.g. Architect, Hardware Consultant) from Editor to Reviewer. Note: If you change yourself to a Reviewer, you can NOT change yourself back to an Editor.
3. Former Viewer Status has been changed to Reviewer.
4. When migrating a Spextra project, made sure to use the CRM opportunity number and read the dialogue box completely. (Allegion users only)

View Plans

1. The colored pins now have a bigger contrast between the selected door and the rest of the filtered doors.
2. The assign hardware set window has been updated. Pagination and Number of items to view are gone allowing more rows of data.
3. Notes: Notes will carry forward from one version to the next with the following exception: If you don't have any notes in Version 1 and then add project and opening notes in Version 2 and then create Version 3 from Version 1 you will not see any notes.

Run Reports

1. You can now filter by Area, Building, Door Material etc. after clicking on Select Specific Opening.

Manage Spec

1. Users will now see a notification at the bottom of the Manage Spec screen when they try to publish, and prices need to be updated.
2. In the Products Tab, a visual indicator has been added to show what items need repricing.
3. Net pricing is no longer displayed, only List Pricing.
4. When versioning, the Punch and Install notice has been removed.
5. Punch and Install data will now be cumulative from version to version.

Revit Plugin

1. New release 2.2.0.17 has been updated to support the new Overtur platform.

Mobile

1. Version 2.0.0 has been released to the App stores and is required on or after March 30, 2020.